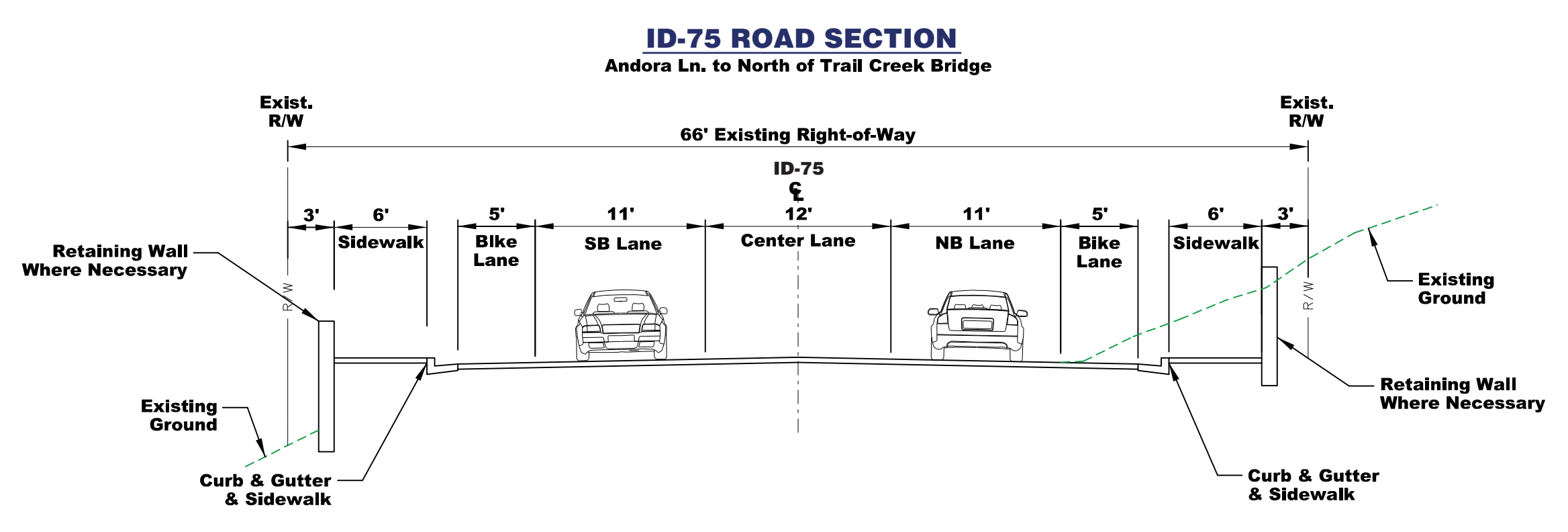
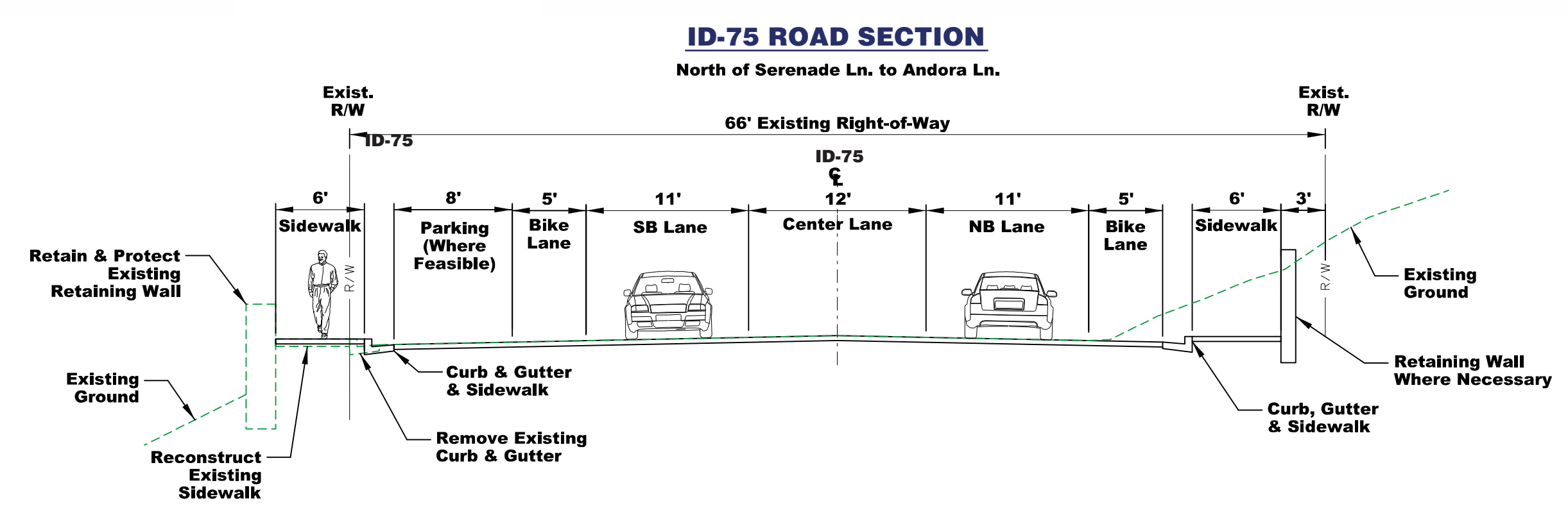
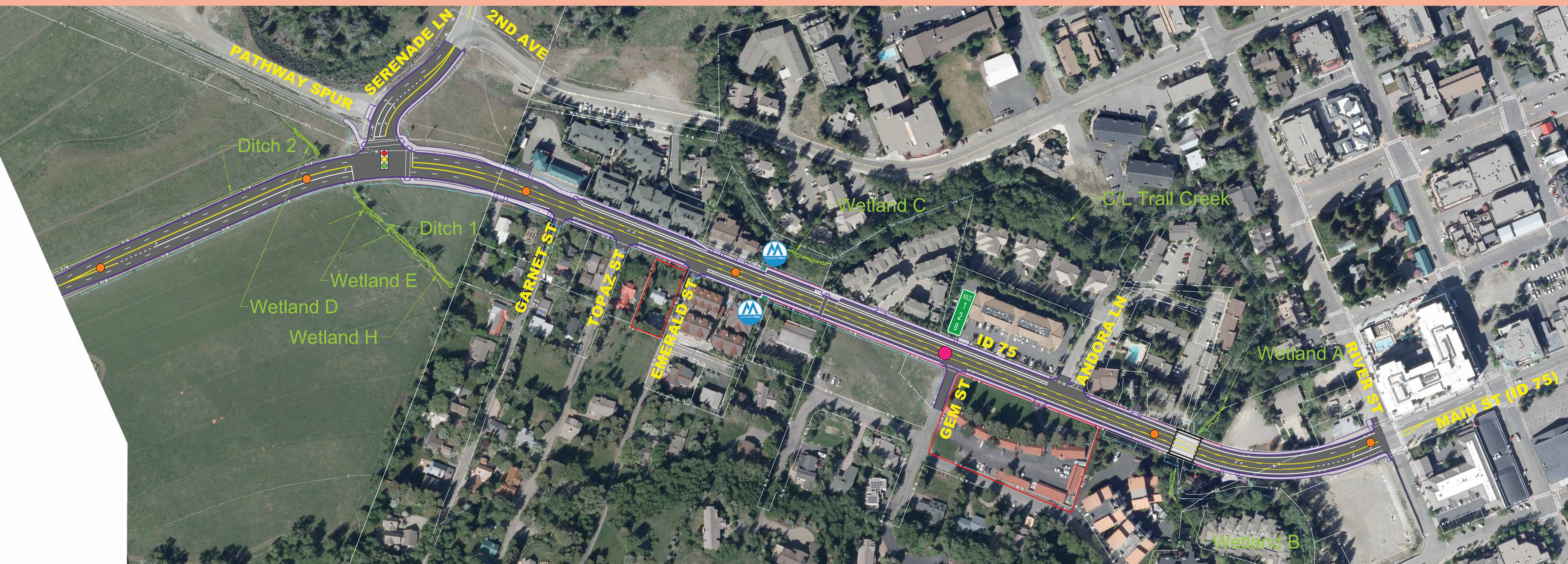


Segment C | Serenade Intersection to River Street | Environmental Map

This design plan is a combination of Option 2 at Serenade and Option 3 north of Serenade presented during the June 2021 Community Discussion with a mid-block pedestrian crossing.



ID-75, Elkhorn Rd. to River St. Project

OCTOBER 2022

0 100 200
Horz. Scale in Feet

Legend

- New Asphalt Pavement
- New Sidewalk
- New Curb
- New Retaining Wall
- New ROW/Easement
- Existing Jurisdictional Wetland
- Existing Jurisdictional Ditch
- Proposed Historic Boundary
- Signalized Intersection
- 1.0 Mile Markers
- 0.1 Mile Markers