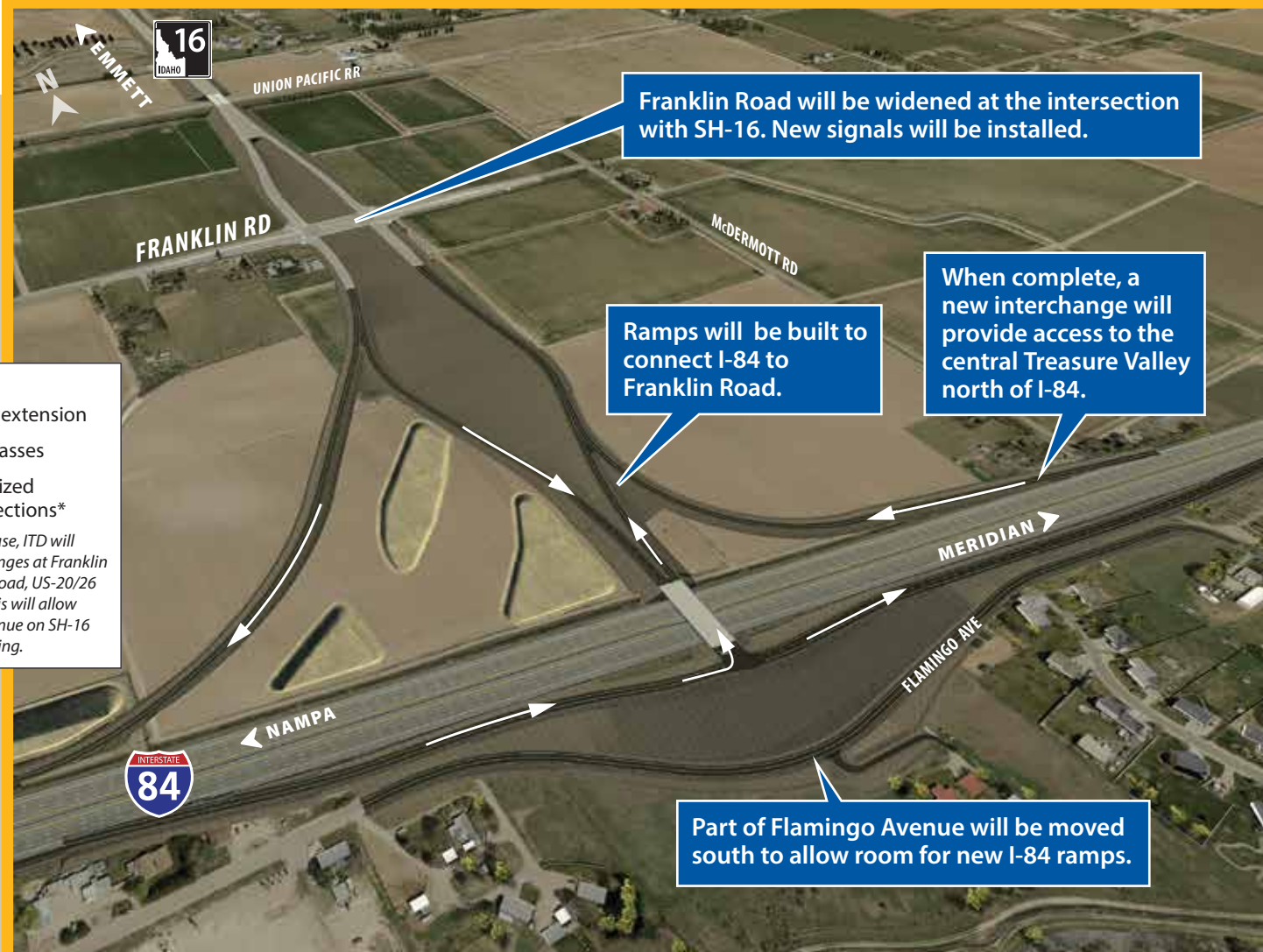
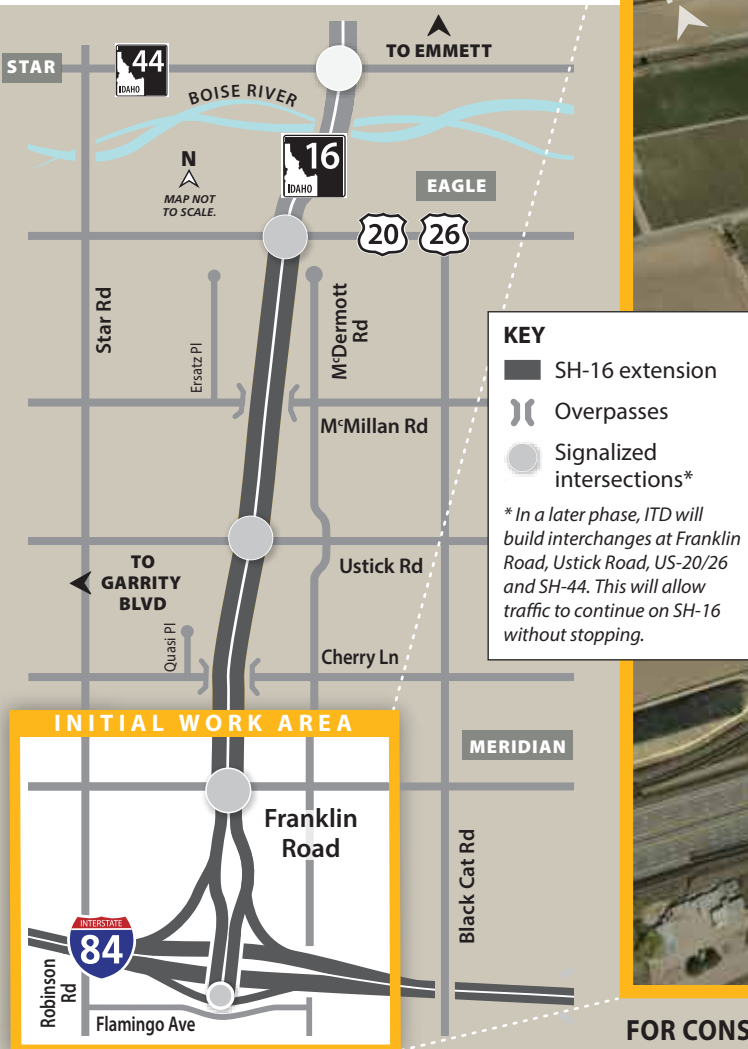


State Highway 16

CONSTRUCTION

I-84 to Franklin Road

Construction is underway on the south end of the new SH-16 extension.



FOR CONSTRUCTION UPDATES: VISIT ltdprojects.org/sh16corridor OR TEXT **HIGHWAY16** to **1-866-483-8422**



**LEADING IDAHO
WITH
TRANSPORTATION**



This project is part of Idaho Governor
Brad Little's "Leading Idaho"
transportation funding solution.

State Highway 16

WHAT TO EXPECT IN 2022

I-84 to Franklin Road

Work in 2022 will involve lane restrictions and occasional overnight closures on I-84.

Occasional flagging, detours and delays may occur near Flamingo Avenue and Franklin Road.

ITD will maintain access to homes and businesses.

Work will be noisy and dusty and may occur at night.

Construction traffic will increase.

ITD will schedule several opportunities for residents, commuters and businesses to ask questions about construction.

Text HIGHWAY16 to 1-866-483-8422 for updates.

