



I-84 South Jerome Interchange

WELCOME

The purpose of this meeting is to provide information on the final design plans to reconstruct and reconfigure the I-84 South Jerome Interchange.



YOUR Safety . . . ► **YOUR Mobility** . . . ► **YOUR Economic Opportunity**



Project Goals

The current interchange was constructed in 1966 and has exceeded its life expectancy. Future growth will exceed capacity of the current layout.

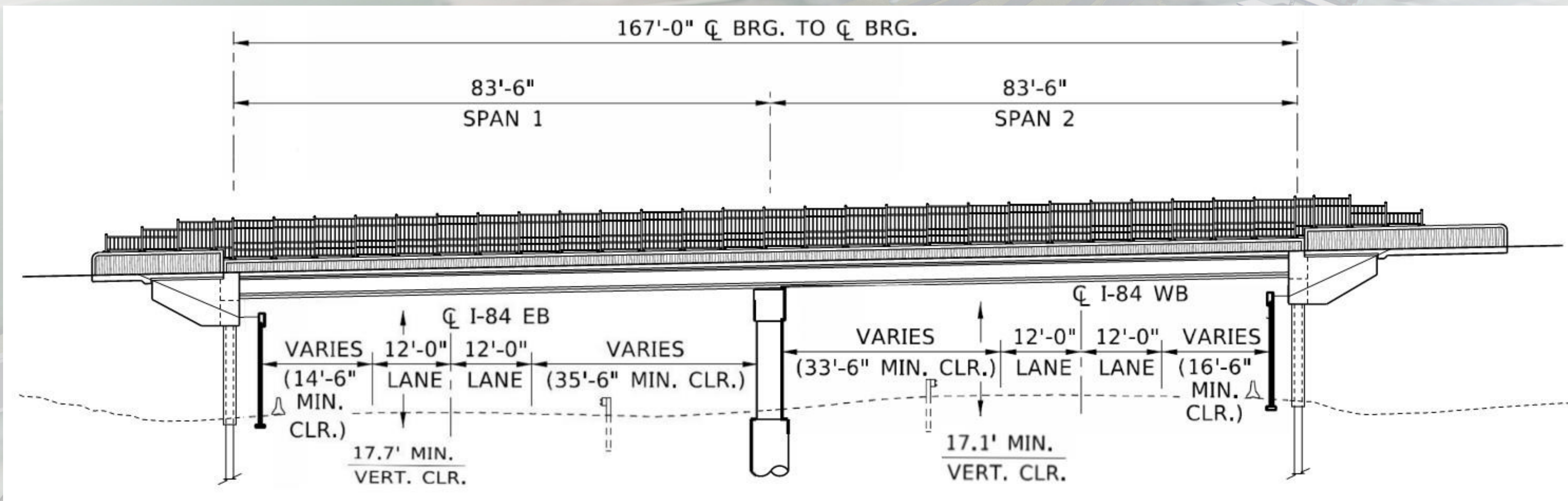
PROJECT IMPROVEMENTS:

- Replace the aging bridge to meet current standards*
- Allow for a third lane in each direction of Interstate 84*
- Improve safety and capacity on ramps & frontage road intersections*
- Include improvements for bike/pedestrian travel*
- Minimize purchase of new public right of way*
- New landscaping will reduce water usage, cost of maintenance*





Bridge Specifics



- Northbound and Southbound bridges are identical in length and width
- Span lengths allows for future construction of a third lane in each direction of Interstate 84
- Concrete girders, piers, walls, and road surface
- Aesthetic features include wall design and colors; additional features still being determined





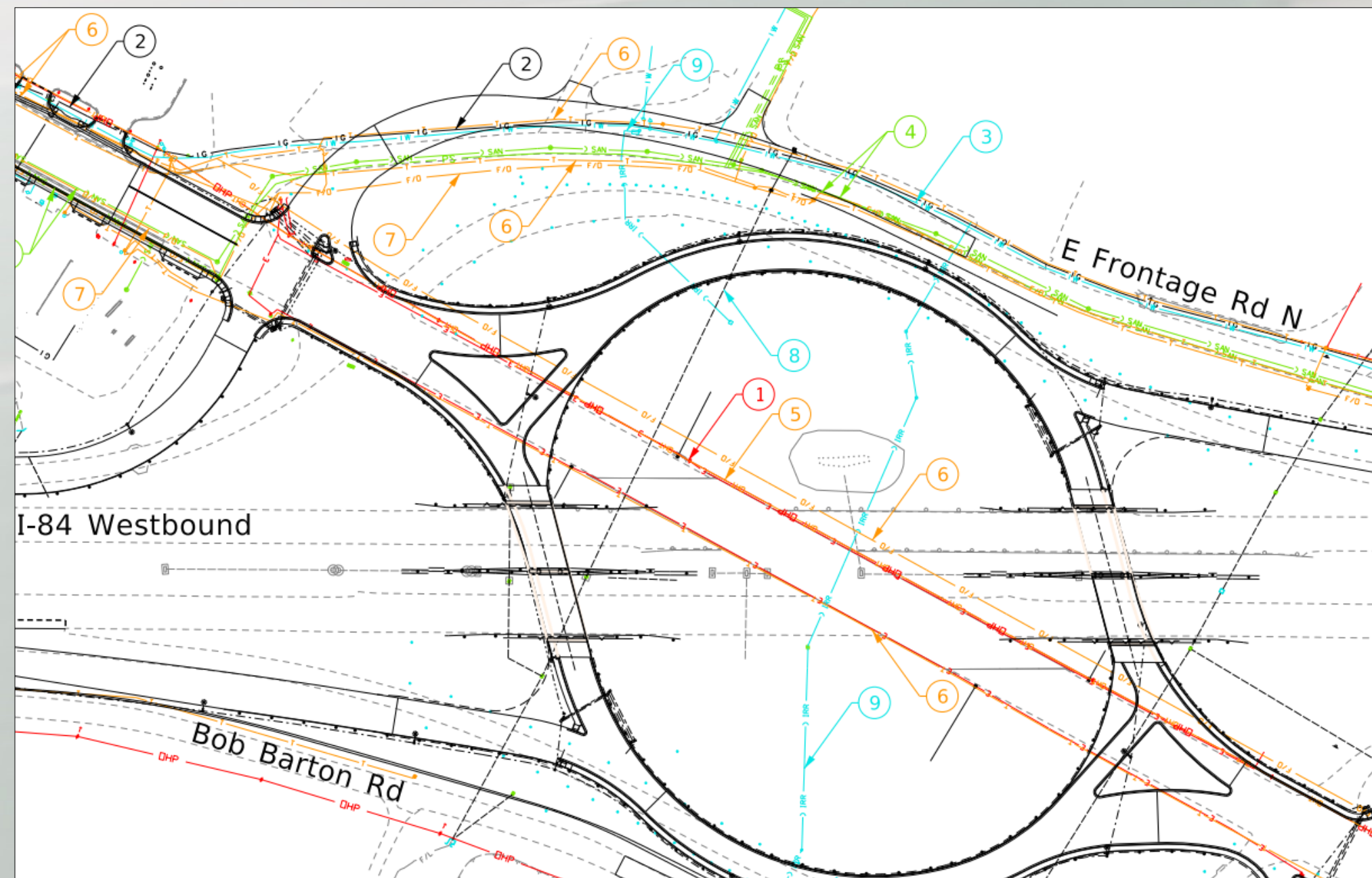
Before and After



YOUR Safety • • • ► **YOUR Mobility** • • • ► **YOUR Economic Opportunity**



Additional Impacts

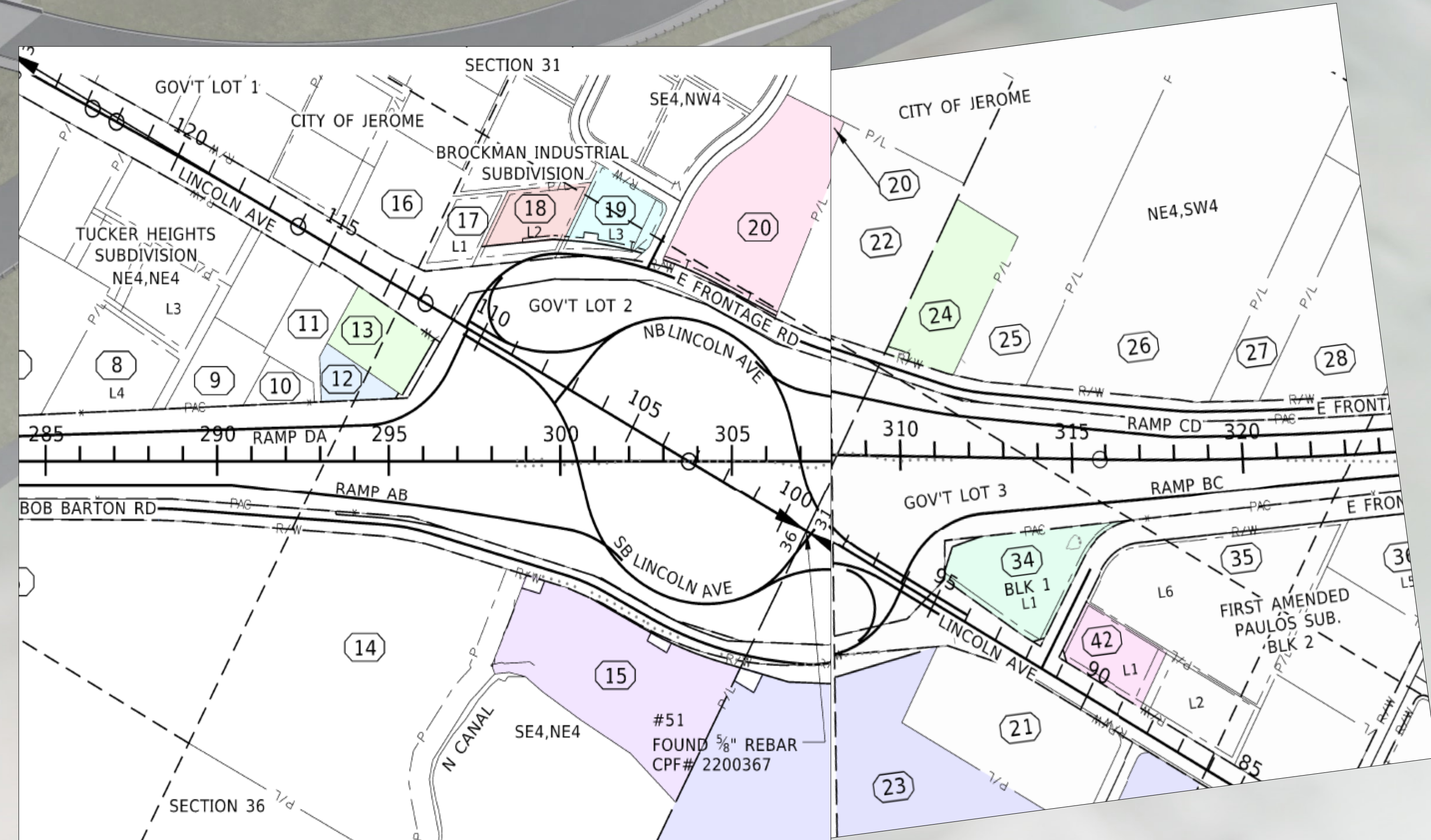


UTILITY IMPACTS:

- Relocation of one Northside Canal Company irrigation ditch
- Relocation of five public utilities: natural gas, power, fiber optic, telephone and cable
- Coordination with City of Jerome for water and sewer services

PROPERTY ACQUISITION:

- 6 property owners
- 9 affected parcels
- 1.154 total acres





Project Schedule

Project Concept
Phase

Preliminary Design Phase

Final Design and Submittal

Construction*

2017

2018

2019

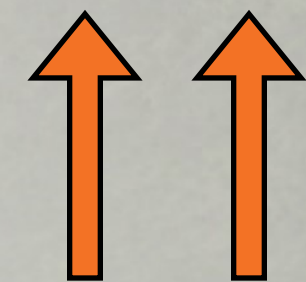
2020

2021

2022

2023

2024



Safety and Operational
Reviews

FHWA and
Environmental
Reports



ROW Negotiations
and Acquisition

Utility Coordination
& Relocation



Indicates Public Meetings

** Construction could begin sooner if funding becomes available*

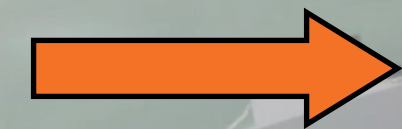


YOUR Safety . . . **YOUR Mobility** . . . **YOUR Economic Opportunity**

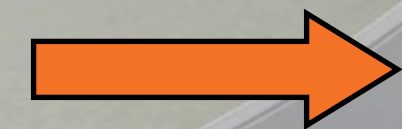


How to Comment

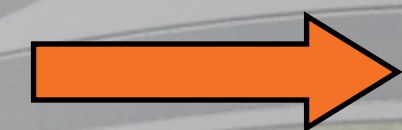
There are multiple ways to submit comments or ask questions of the project team:



Fill out a comment form tonight



Email: nathan.jerke@itd.idaho.gov



Visit the project website between Dec. 9—30

itdprojects.org/projects/i-84-south-jerome-interchange



**Mail: ITD District Four
Attn: Nathan Jerke
216 South Date
Shoshone, ID 83352**

Please submit comments by Dec. 30



YOUR Safety . . . ► YOUR Mobility . . . ► YOUR Economic Opportunity